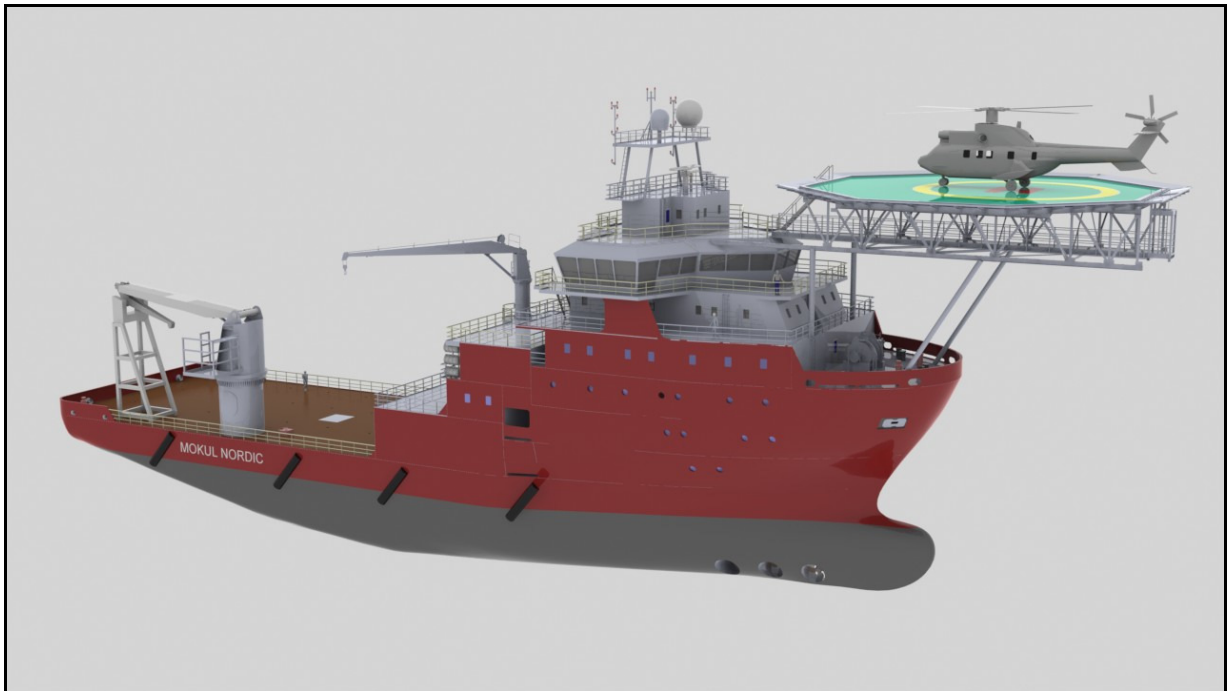




**NORDIC**  
MARITIME PTE LTD

## **MOKUL NORDIC HULL NO 127**

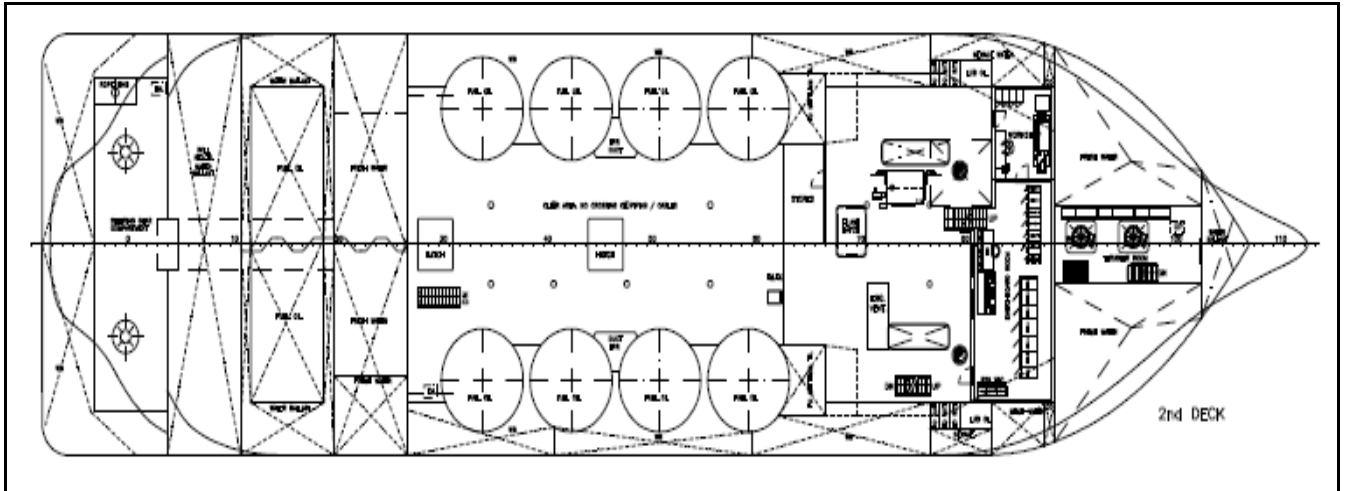


# **TECHNICAL SPECIFICATION OF 75.6 M VS470 MULTI PURPOSE OFFSHORE VESSEL-MKIII**

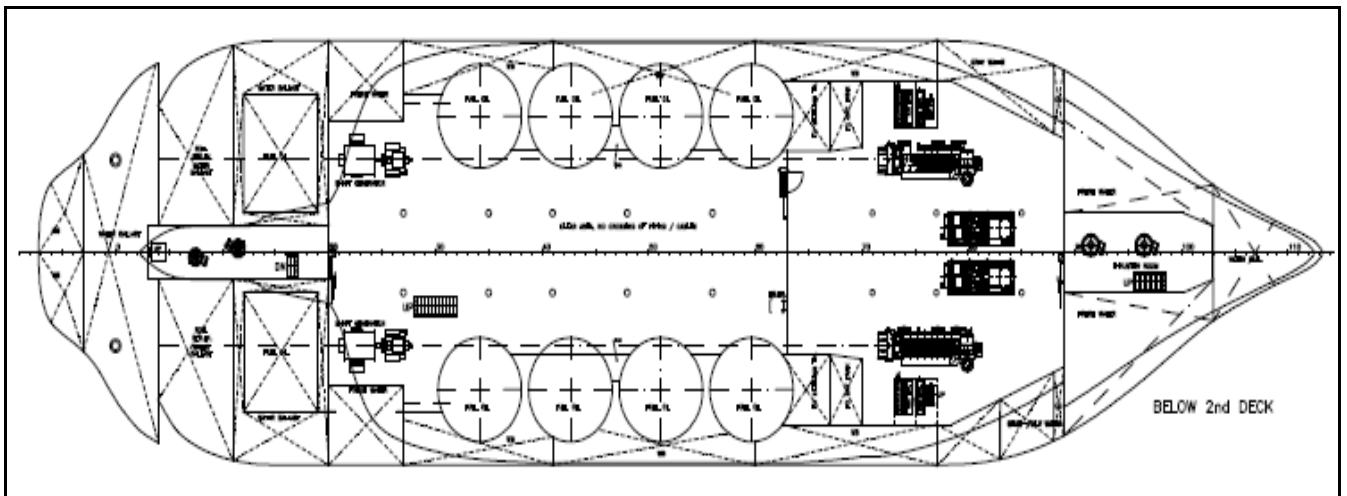




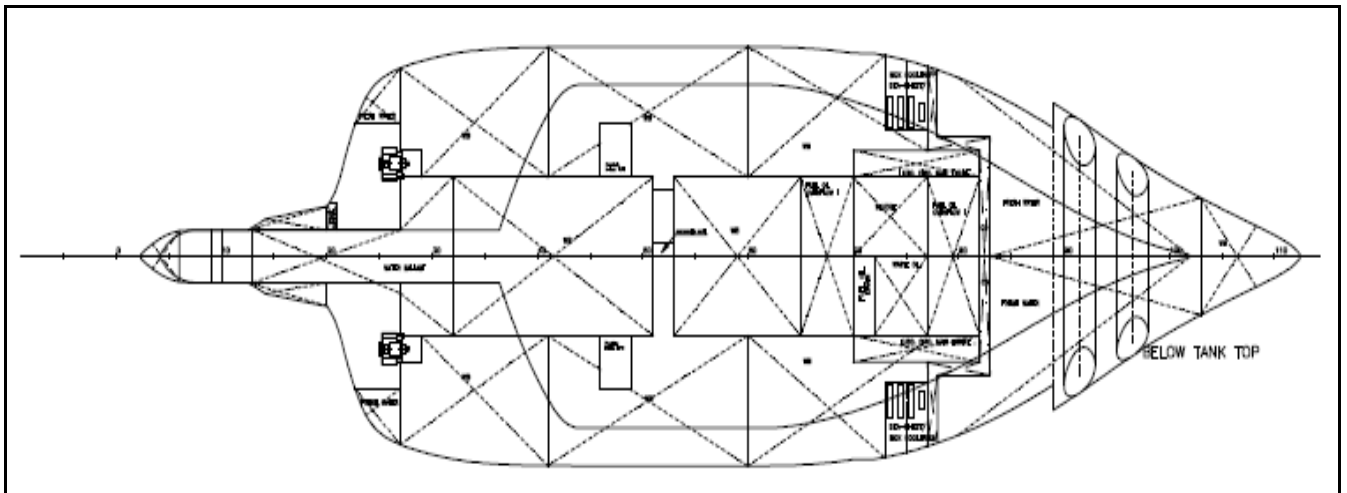
2nd Deck View:



Below 2<sup>nd</sup> deck view:



Below Tank Top view:



## 2. TECHNICAL SPECIFICATION

Class Notation	DNV, +1A1, SF, E0, AUTR ,, dk+, hl(2.5), NAUT OSV(T), CLEAN, Comfort V(3)
SPS compliance	SPS code 2008
Length overall	75.55m
Beam moulded	19.20m
Depth to 1st deck	7.60m
Draught scantling	6.50m
Main Deck Strength	10 Tons/ M2
Clear 1 <sup>st</sup> Deck Area & deck load	700Sq.m & 800 MT
Trials speed	min.12 Knots with closed moon pool provided with main engine output 2x2320 kW at a draft of 4.00 m at Sea State 2.
Accommodation	59 Men
<b>PROPULSION SYSTEMS</b>	
Two (2) Medium speed marine main diesel engines rated 2320 kW @ 900 RPM driving independent propulsion systems	
Two (2) controllable pitch stainless steel propellers of 2900 mm dia & 230 RPM Speed	
Two electrical driven tunnel thrusters forward rated 800kW & Two (2) electrical driven tunnel thrusters aft rated 590kW	
A dual redundant Dynamic Positioning (DP) system with all modes and functions necessary for an efficient operation	
<b>MANOEUVRING MACHINERY AND EQUIPMENT</b>	
Two (2) high lift rudders with forged steel rudder-stock and with stainless steel liner and steel boxes	
Two (2) steering gears, Electro-hydraulic type	
<b>ANCHORING AND MOORING EQUIPMENT</b>	
Two (2) stockless spec anchors with Chain and shackles in accordance with Class requirements.	
One(1) electro hydraulic driven anchor windlass/ mooring winch	
Two (2) declutchable cable lifters of 12 tons pull at 0 - 14 m/min. with band brake	
Two (2) chain stoppers with lashing screws	
Two (2) electro-hydraulic driven Capstans of 8 tons Capacity	
Two (2) electro-hydraulic Tugger Winches of 10 tons capacity and Wire capacity: 60 m.	
<b>POWER GENERATION</b>	
Shaft Generators	2 x 1600KW, 440V 60Hz 3 Phase
Auxiliary Diesel Generator	2 x 440KW, 440V 60Hz 3 Phase



Emergency Diesel Generator	1 x 85KW , 440V 60Hz 3 phase
<b>PUMPS</b>	
Ballast pumps	2nos , 100 m3/hr , 90m Head
FO Transfer Pumps	2nos , 100 m3/hr , 90m Head
Fresh water Pumps	2nos , 100 m3/hr , 40m Head
FUEL PURIFICATION PLANT	One (1) fully automatic, self-cleaning purifiers Capacity : min. 2000 l/h
WATER MAKER	1 No. R.O plants of capacity 25 Tons per day
SEWAGE TREATMENTS	1nos with a capacity for 60persons, USCG and IMO Approved
<b>TANK CAPACITY</b>	
SWB	2400 m3
FW Tank (Potable)	850 m3
F.O Tank	1100 m3
Sewage Tank	22 m3
Settling Tank	2x45 m3
F.O Overflow tank	100 m3
Day Tank	2x25 m3
Lube oil Tank/Hydraulic oil tank	30 m3 / 2 m3
Oily/water collecting tank	28 m3
Waste oil/Sludge tanks	20 m3 /8 m3
<b>LIFE SAVING APPLIANCES</b>	
MOB-Boat	1 diesel engine driven boat, Minimum speed 25Knots
Life rafts with equipment	Two (2) life raft cranes and life rafts for 60 persons
Survival suits	60 Nos
A helicopter deck for helicopter Super Puma, D rating of 22.20 m The helicopter reception on top of wheelhouse with Fifteen(15) seats	
1 No of Cargo Crane of 3.0T @ 16m radius, Electro hydraulic knuckle boom type	
<b>NAVIGATION EQUIPMENT</b>	
Radar plants	One (1) radar 10 cm/ S band, IMO ARPA, One (1) radar 3 cm/ X band w/mini ARPA, One (1) radar slave display LCD with interswitch to 10 and 3 cm radars.
Gyro plants, auto pilots	Three (3) Gyro compass for navigation (bridge) included in the DP system. With



	<b>Analogue &amp; Digital repeater</b>
<b>Magnetic Compasses</b>	<b>One(1)Magnetic compass, 10” projector type</b>
<b>DGPS, Echo sounder and Speed log</b>	<b>One (1) DGPS/Glonass 12 channel, dual frequency receivers with antenna, omputer and operator interface One (1) Echo sounder, One (1) Doppler type Speed log</b>
<b>Two (2) Electronic Chart Systems fully interfaced to DGPS, radars(tracked ARPA targets), gyro compass, magnet compass, speed log, echo sounder, autopilot and AIS One (1) IMO approved AIS system for automatic information of the barge’s identity, position, course, speed etc One (1) IMO approved Ship Security Alert System One (1) IMO approved Voyage Data Recorder (VDR) shall be installed for collecting and storing relevant ship’s data</b>	
<b>COMMUNICATION</b>	
<b>Radio Communication Equipment</b>	<b>One (1) HF/MF radio station, 150W with DSC One (1) Transmitter antenna AT82T One (1) GMDSS A3 station Two (2) Semi duplex VHF with within build call sign .A DSC Four (4) Antenna AV7 VHF Dipol</b>
<b>Mob boat radios, EPIRB, radar transponders</b>	<b>One (1) Jotron/Sart Two (2) Radar transponders Three (3) Portable GMDSS-VHF One (1) Jotron, Tron 45SX manual emergency beacon GMDSS</b>
<b>VHF, UHF and Telephone systems</b>	<b>Three (3) Portable, ex proof UHF-Motorola Three (3) Helmet equipment for Motorola Two (2) Smoke diver helmet equipment Two (2) Simplex VHF with handheld mic. Two (2) Remote connections to semi duplex VHF and speaker Two (2) Antenne AV7 VHF Dipol Two (2) Interfaces for fwd and aft VHF’s for aft operator chairs. Integrated telephone, PA and intercom system</b>
<b>Misc. EQUIPMENT</b>	
<b>Maintenance/auxiliary Equipment</b>	<b>One (1) Lathe One (1) Drilling machine One (1) Grinding machine One (1) Electric welding machine One (1) Steel topped bench with drawers and lockers underneath</b>